

Integrating EHRs With Reference Labs for Biomarker Testing

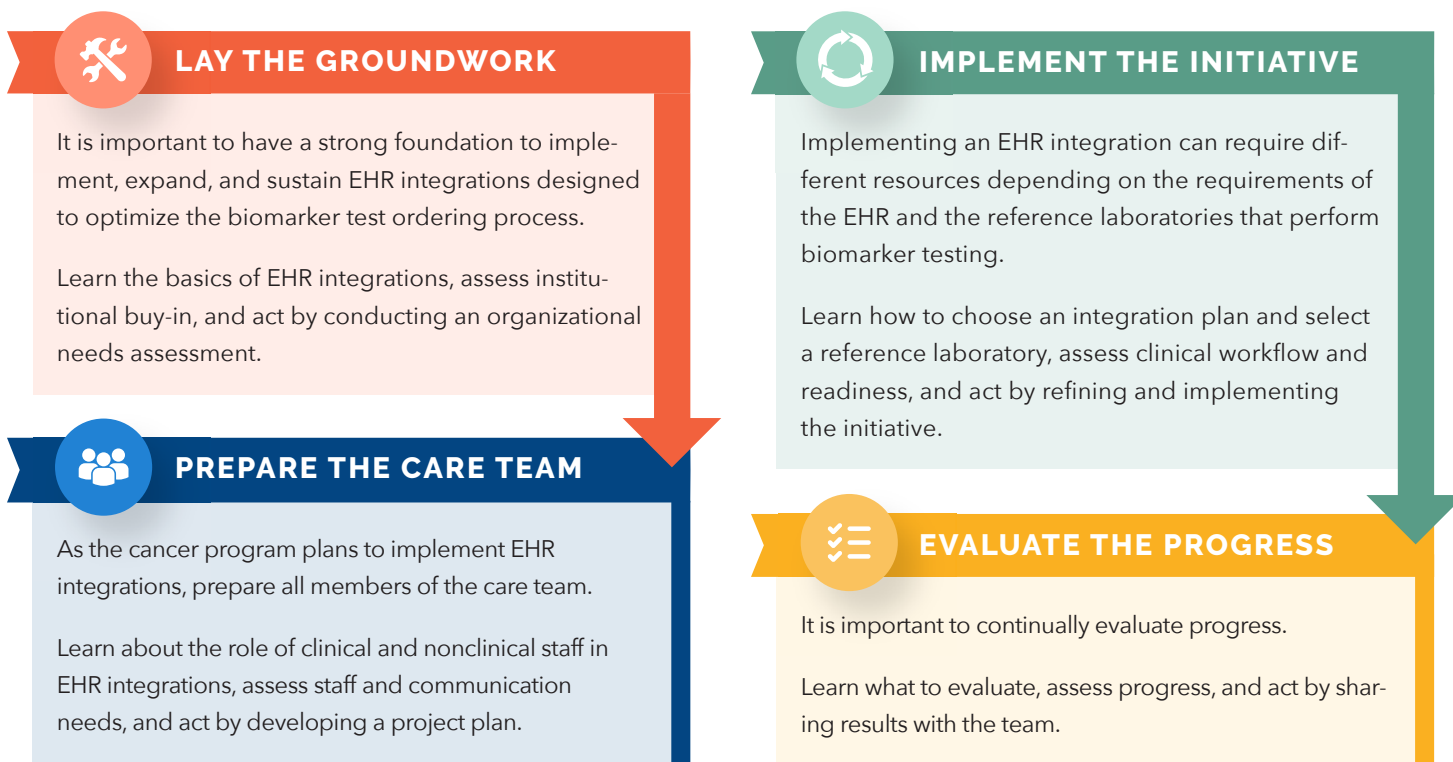
Benefits of EHR Integration With Reference Labs

Integrating electronic health record (EHR) systems with reference labs for biomarker testing offers several advantages:

- ✓ **Streamlined Ordering and Results:**
Eliminates manual processes and reduces administrative burden.
- ✓ **Improved Turnaround Time:**
Enables more timely treatment decisions.
- ✓ **Reduced Errors:**
Minimizes risk of errors from manual data entry and transcription.
- ✓ **Improved Communication:**
Enhances timely exchange between providers and reference labs, ensuring results are readily available in the EHR.
- ✓ **Optimized Treatment Planning:**
Enables quicker access to critical genomic information, leading to faster, more personalized treatment plans and better patient outcomes.
- ✓ **Enhanced Data Insights:**
Improves reporting capabilities by leveraging discrete genomic components, enabling easier tracking of utilization metrics and identification of patient cohorts.

Roadmap to EHR Integration

In 2024, the Association of Cancer Care Centers (ACCC) developed the [EHR Integrations for Biomarker Testing Roadmap](#) to guide cancer programs through the process:



Project Planning Tips

- ✓ **Clinical Champions:**
Identify and engage key champions who will advocate for and support the integration process.
- ✓ **Precision Medicine Oversight Committee:**
Establish a dedicated committee to oversee the integration project and ensure alignment with organizational goals.
- ✓ **Administrative Leadership:**
Secure adequate resources and support for the project.
- ✓ **Coordinated Project Management:**
Employ a structured project management approach with 1 contact person who is responsible for clear timelines and milestones.
- ✓ **Thorough Testing Plan:**
Develop and execute a comprehensive testing plan to validate the integration and identify potential issues.
- ✓ **EHR Result Display Validation:**
Ensure test results are displayed correctly and clearly within the EHR system.
- ✓ **Plan for Order Updates and Optimization:**
Allocate time post-go-live to track updates, build clinical enhancements such as smart phrases, and develop decision support tools using discrete genomic results.

EHR Integration Options and Examples

Some EHRs, like Flatiron's OncoEMR, offer molecular profiling integration capabilities and have collaborated with several reference labs to submit test orders, track real-time status updates, and receive the test results directly into the patient record. A list of reference laboratories that have built-in lab-result coordination with OncoEMR can be found at flatiron.com/interfaces.

EPIC users have 2 primary methods for integrating with reference labs:

Direct Interface (HL7):

Involves establishing a direct connection between EPIC's EHR software and each reference lab's system

Offers full control over the integration, enabling more customization options

Allows for seamless order transmission and result retrieval within the EPIC workflow

Can take slightly longer to complete the integration compared to Sigmund's AURA platform

AURA (Orders and Results Anywhere Network):

Software suite that enables quick and seamless connections with multiple participating labs

Includes preconfigured lab workflows and order/result mappings using Turbocharger packages

Offers an out-of-the-box solution for receiving orders and sending results, significantly reducing implementation time compared to traditional interfaces

Less customizable

Plan for quarterly updates

Choosing Between Direct Interface and AURA:

AURA significantly simplifies the integration process but offers fewer customization options.

A direct interface may be necessary if the cancer program has more specific requirements but needs ongoing maintenance for interface upgrades.

Not all reference labs are on the AURA network. View the most current list of reference laboratories by logging in with EPIC credentials at showroom.epic.com.

Explore additional planning and implementation resources at acc-cancer.org/EHR-Integration.

In partnership with:



This resource was made possible by support from:



The **Association of Cancer Care Centers (ACCC)** provides education and advocacy for the cancer care community. For more information, visit acc-cancer.org.

© 2025. Association of Cancer Care Centers. All rights reserved. No part of this publication may be reproduced or transmitted in any form or by any means without written permission.